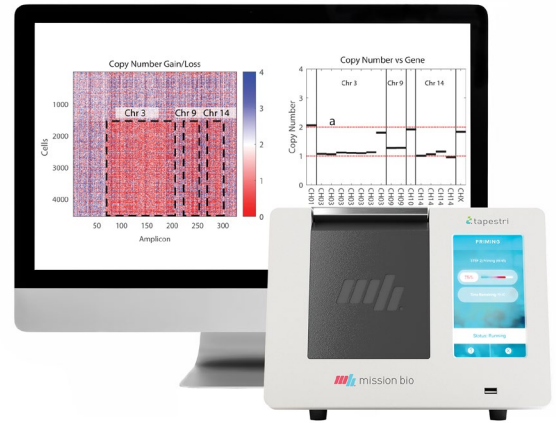


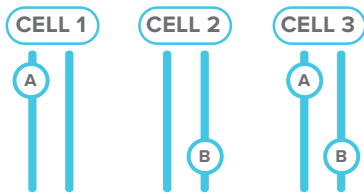
Mission Bio Tapestri[®] Platform

Clonal Diversity Revealed

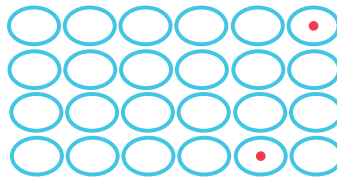
The Tapestri Platform is the first and only single-cell platform to simultaneously detect Copy Number Variants (CNVs) and Single Nucleotide Variants (SNVs) from the same cells. To resolve heterogeneity and improve patient stratification, therapy selection, and disease monitoring we need to detect rare clonal populations and identify co-occurrence and zygosity within every single cell.



THE POWER OF SINGLE-CELL DNA ANALYSIS



Identify Co-occurrence



Detect Rare Cell Population

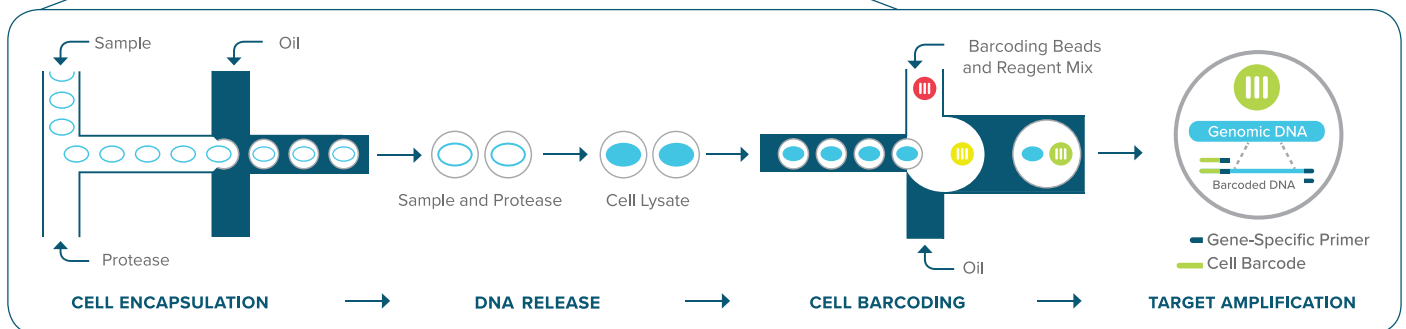
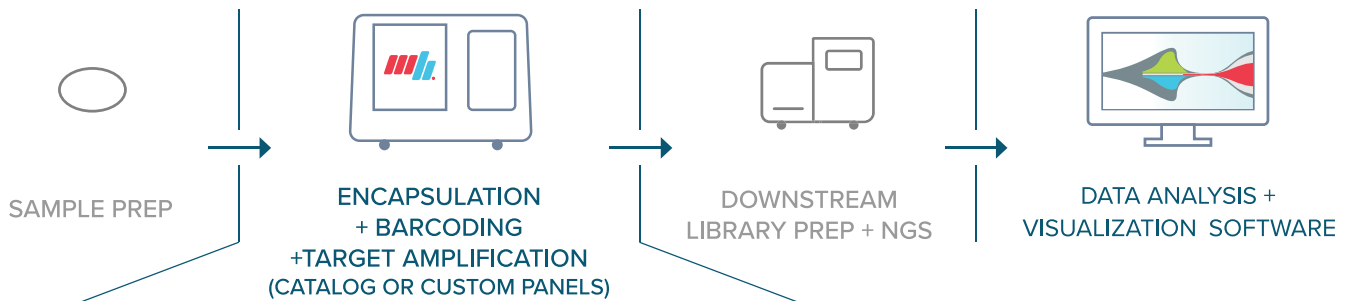


Measure Zygosity

High-Throughput Single-Cell DNA Platform

The Tapestri Platform enables targeted single-cell DNA analysis at unprecedented speed and scale. Use our instrument, reagents and consumables up-front of your NGS system followed by Tapestri Pipeline and Insights software for data analysis and visualization.

HOW TAPESTRY WORKS



Targeted Panels for Precision Discoveries

The Tapestri Platform runs targeted Single-Cell DNA Panels with catalog and customizable content, so you can focus on the mutations and regions of interest that are most informative for your disease research. Panel applications include hematologic malignancies, solid tumor profiling, and genome editing.

It's the ability to understand heterogeneity at the single-cell level that is poised to help move precision medicine forward.



HEMATOLOGY

- Acute Myeloid Leukemia
- Myeloid
- Chronic lymphocytic leukemia
- Acute lymphocytic leukemia
- Myeloproliferative neoplasms
- Diffuse large B-cell lymphoma
- Follicular lymphoma
- Mantle cell lymphoma
- T-cell lymphoma (all types)
- Chronic myeloid leukemia
- Multiple myeloma
- Classic Hodgkin's lymphoma
- Myelodysplastic syndromes
- Chronic myelogenous leukemia

SOLID TUMOR

- Tumor Hotspot
- Breast invasive carcinoma
- Lung squamous cell carcinoma
- Colon adenocarcinoma
- Liver hepatocellular carcinoma
- Lung adenocarcinoma
- Ovarian serous cystadenocarcinoma
- Prostate adenocarcinoma
- Skin cutaneous melanoma
- Kidney renal clear cell carcinoma
- Pancreatic adenocarcinoma

CUSTOM PANELS



For maximum flexibility, use Tapestri Single-Cell DNA Custom Panels to easily tailor a panel to the most relevant genomic regions of heterogeneity for your research. With the simple and intuitive interface of Tapestri Designer, your custom design can be completed within minutes. Primer design algorithms and multiplex PCR biochemistry have been optimized for the Tapestri Platform, so you can be confident of high design coverage and high panel uniformity.

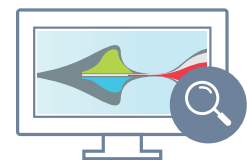
Resolve Your Complex Clonal Questions

With Tapestri Pipeline and Insights software, Mission Bio offers a complete software solution for single-cell DNA analysis. From sequence import to data analysis and visualization, our turnkey software ensures you gain meaningful insights to advance your discoveries.

STEP 1
Upload to
Tapestri Pipeline



STEP 2
Explore your subclones
in Tapestri Insights



LEARN MORE

www.missionbio.com
+1 (415) 854-0058 | info@missionbio.com

For Research Use Only. Not for use in diagnostic procedures.
© 2019 Mission Bio, Inc. All rights reserved.
Flyer_MissionBio_Tapestri_Platform_RevA

